



CCF2E30-300



H75-H120

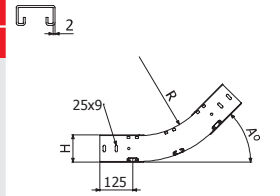


H150

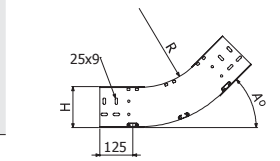


	A		R		B		H		GC	
	°	mm	inch	mm	inch	mm	inch	REF.	kg/ud	
CCF2E30-300 100X100X2	30	300	12"	100	4"	100	4"	2/16024	2,18	
CCF2E30-300 150X100X2	30	300	12"	150	6"	100	4"	2/16025	2,33	
CCF2E30-300 200X100X2	30	300	12"	200	8"	100	4"	2/16026	2,48	
CCF2E30-300 300X100X2	30	300	12"	300	12"	100	4"	2/16027	2,78	
CCF2E30-300 400X100X2	30	300	12"	400	16"	100	4"	2/16028	3,09	
CCF2E30-300 500X100X2	30	300	12"	500	20"	100	4"	2/16029	3,39	
CCF2E30-300 600X100X2	30	300	12"	600	24"	100	4"	2/16030	3,70	
CCF2E30-300 150X120X2	30	300	12"	150	6"	120	4 5/7"	2/16031	2,66	
CCF2E30-300 200X120X2	30	300	12"	200	8"	120	4 5/7"	2/16032	2,81	
CCF2E30-300 300X120X2	30	300	12"	300	12"	120	4 5/7"	2/16033	3,11	
CCF2E30-300 400X120X2	30	300	12"	400	16"	120	4 5/7"	2/16034	3,42	
CCF2E30-300 500X120X2	30	300	12"	500	20"	120	4 5/7"	2/16035	3,72	
CCF2E30-300 600X120X2	30	300	12"	600	24"	120	4 5/7"	2/16036	4,03	
CCF2E30-300 150X150X2	30	300	12"	150	6"	150	6"	2/16037	3,16	
CCF2E30-300 200X150X2	30	300	12"	200	8"	150	6"	2/16038	3,32	
CCF2E30-300 300X150X2	30	300	12"	300	12"	150	6"	2/16039	3,62	
CCF2E30-300 400X150X2	30	300	12"	400	16"	150	6"	2/16040	3,92	
CCF2E30-300 500X150X2	30	300	12"	500	20"	150	6"	2/16041	4,23	
CCF2E30-300 600X150X2	30	300	12"	600	24"	150	6"	2/16042	4,53	

2 x JUFE



H75-H120



H150

CCF2E45-300



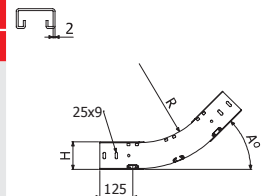
H75-H120



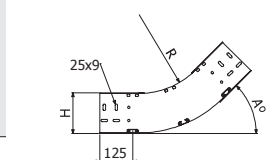
H150

	A		R		B		H		GC	
	°	mm	inch	mm	inch	mm	inch	REF.	kg/ud	
CCF2E45-300 100X100X2	45	300	12"	100	4"	100	4"	2/16050	2,62	
CCF2E45-300 150X100X2	45	300	12"	150	6"	100	4"	2/16051	2,85	
CCF2E45-300 200X100X2	45	300	12"	200	8"	100	4"	2/16052	3,08	
CCF2E45-300 300X100X2	45	300	12"	300	12"	100	4"	2/16053	3,53	
CCF2E45-300 400X100X2	45	300	12"	400	16"	100	4"	2/16054	3,99	
CCF2E45-300 500X100X2	45	300	12"	500	20"	100	4"	2/16055	4,45	
CCF2E45-300 600X100X2	45	300	12"	600	24"	100	4"	2/16056	4,90	
CCF2E45-300 150X120X2	45	300	12"	150	6"	120	4 5/7"	2/16057	3,25	
CCF2E45-300 200X120X2	45	300	12"	200	8"	120	4 5/7"	2/16058	3,48	
CCF2E45-300 300X120X2	45	300	12"	300	12"	120	4 5/7"	2/16059	3,93	
CCF2E45-300 400X120X2	45	300	12"	400	16"	120	4 5/7"	2/16060	4,39	
CCF2E45-300 500X120X2	45	300	12"	500	20"	120	4 5/7"	2/16061	4,84	
CCF2E45-300 600X120X2	45	300	12"	600	24"	120	4 5/7"	2/16062	5,30	
CCF2E45-300 150X150X2	45	300	12"	150	6"	150	6"	2/16063	3,86	
CCF2E45-300 200X150X2	45	300	12"	200	8"	150	6"	2/16064	4,09	
CCF2E45-300 300X150X2	45	300	12"	300	12"	150	6"	2/16065	4,55	
CCF2E45-300 400X150X2	45	300	12"	400	16"	150	6"	2/16066	5,00	
CCF2E45-300 500X150X2	45	300	12"	500	20"	150	6"	2/16067	5,46	
CCF2E45-300 600X150X2	45	300	12"	600	24"	150	6"	2/16068	5,92	

2 x JUFE



H75-H120



H150



CCF2E60-300



H75-H120

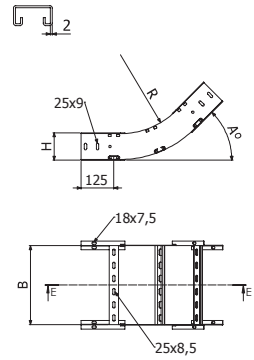


H150

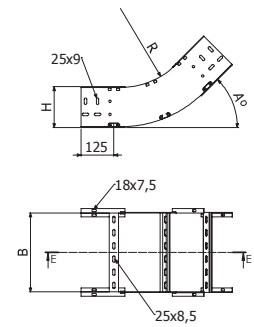


	A °	R		B		H		GC	
		mm	inch	mm	inch	mm	inch	REF.	kg/ud
CCF2E60-300 100X100X2	60	300	12"	100	4"	100	4"	2/16076	2,92
CCF2E60-300 150X100X2	60	300	12"	150	6"	100	4"	2/16077	3,14
CCF2E60-300 200X100X2	60	300	12"	200	8"	100	4"	2/16078	3,37
CCF2E60-300 300X100X2	60	300	12"	300	12"	100	4"	2/16079	3,83
CCF2E60-300 400X100X2	60	300	12"	400	16"	100	4"	2/16080	4,28
CCF2E60-300 500X100X2	60	300	12"	500	20"	100	4"	2/16081	4,74
CCF2E60-300 600X100X2	60	300	12"	600	24"	100	4"	2/16082	5,20
CCF2E60-300 150X120X2	60	300	12"	150	6"	120	4 5/7"	2/16083	3,61
CCF2E60-300 200X120X2	60	300	12"	200	8"	120	4 5/7"	2/16084	3,84
CCF2E60-300 300X120X2	60	300	12"	300	12"	120	4 5/7"	2/16085	4,29
CCF2E60-300 400X120X2	60	300	12"	400	16"	120	4 5/7"	2/16086	4,75
CCF2E60-300 500X120X2	60	300	12"	500	20"	120	4 5/7"	2/16087	5,21
CCF2E60-300 600X120X2	60	300	12"	600	24"	120	4 5/7"	2/16088	5,66
CCF2E60-300 150X150X2	60	300	12"	150	6"	150	6"	2/16089	4,34
CCF2E60-300 200X150X2	60	300	12"	200	8"	150	6"	2/16090	4,56
CCF2E60-300 300X150X2	60	300	12"	300	12"	150	6"	2/16091	5,02
CCF2E60-300 400X150X2	60	300	12"	400	16"	150	6"	2/16092	5,48
CCF2E60-300 500X150X2	60	300	12"	500	20"	150	6"	2/16093	5,93
CCF2E60-300 600X150X2	60	300	12"	600	24"	150	6"	2/16094	6,39

2 x JUFE



H75-H120



H150

CCF2E-300



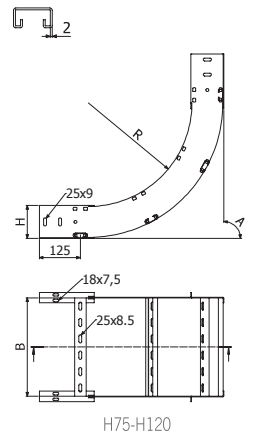
H75-H120



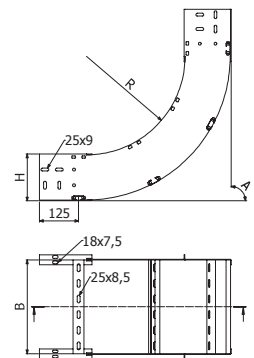
H150

	A °	R		B		H		GC	
		mm	inch	mm	inch	mm	inch	REF.	kg/ud
CCF2E-300 100X100X2	90	300	12"	100	4"	100	4"	2/16102	3,65
CCF2E-300 150X100X2	90	300	12"	150	6"	100	4"	2/16103	3,96
CCF2E-300 200X100X2	90	300	12"	200	8"	100	4"	2/16104	4,26
CCF2E-300 300X100X2	90	300	12"	300	12"	100	4"	2/16105	4,87
CCF2E-300 400X100X2	90	300	12"	400	16"	100	4"	2/16106	5,48
CCF2E-300 500X100X2	90	300	12"	500	20"	100	4"	2/16107	6,09
CCF2E-300 600X100X2	90	300	12"	600	24"	100	4"	2/16108	6,69
CCF2E-300 150X120X2	90	300	12"	150	6"	120	4 5/7"	2/16109	4,56
CCF2E-300 200X120X2	90	300	12"	200	8"	120	4 5/7"	2/16110	4,87
CCF2E-300 300X120X2	90	300	12"	300	12"	120	4 5/7"	2/16111	5,47
CCF2E-300 400X120X2	90	300	12"	400	16"	120	4 5/7"	2/16112	6,08
CCF2E-300 500X120X2	90	300	12"	500	20"	120	4 5/7"	2/16113	6,69
CCF2E-300 600X120X2	90	300	12"	600	24"	120	4 5/7"	2/16114	7,30
CCF2E-300 150X150X2	90	300	12"	150	6"	150	6"	2/16115	5,51
CCF2E-300 200X150X2	90	300	12"	200	8"	150	6"	2/16116	5,81
CCF2E-300 300X150X2	90	300	12"	300	12"	150	6"	2/16117	6,42
CCF2E-300 400X150X2	90	300	12"	400	16"	150	6"	2/16118	7,03
CCF2E-300 500X150X2	90	300	12"	500	20"	150	6"	2/16119	7,63
CCF2E-300 600X150X2	90	300	12"	600	24"	150	6"	2/16120	8,24

2 x JUFE



H75-H120



H150